



# Grinding Guide

## Grinding and Polishing Systems



# Grinders

## Scanmaskin 18



With the Scanmaskin 18 you can quickly and easily sand and re-finish hardwood floors; old, painted, as well as new. The Scanmaskin 18 can be used to re-finish hardwood floors as well as sand even the surface. The Scanmaskin 18 can be operated on both hardwood floors and parquet floors.

The Scanmaskin 18 grinds and sands really close to the wall, which results in extremely clean and effective grinds along edges. If the skirting boards are removed before grinding, the need for a hand held grinder is eliminated.

The Scanmaskin 18 can easily be separated into two different modules for easy and convenient transportation, and makes it an extremely attractive option for limited space requirements.

**Technical Data**  
Motor power: 2,2 kW (3 hP)  
Voltage: 1 x 230 V  
Current: 12 Amp  
Frequency: 50 Hz / 60 Hz  
Speed: 300-1100/min

Grinding discs: 3 x 150 mm (3x5,9in)  
Grinding width: 450 mm (18in)  
Weight: 95 kg (209 lbs), grinding unit: 65 kg (143 lbs), handle: 30 kg (66 lbs)

*We recommend the dust collector Scan Dust 2900 for dust free sanding.*

## Scan Combiflex 330



The SC 330 can also be configured as a single disc edger by adjusting the axel in two different directions. With the SC 330 you can grind along edges extremely clean and effective.

The Scan Combiflex 330 (SC 330) is two machines in one. The SC 330 features a single 330 mm (13in) grinding disc that works great for grinding small areas, removing tough coatings, and general surface preparation. The SC 330 can also be configured as a single disc edger by adjusting the axel in two different directions. This unique system allows the SC 330 to be angled towards the edge, which results in extremely clean and effective grinds along edges. This makes the SC 330 one of the best options for grinding and polishing edges, since it eliminates the need for hand held grinders.

The 330 mm disc on the SC 330 can be configured with 3, 6, or 9 of our metal or resin bond diamond tools. This allows the machine to cut more aggressively when necessary (3 tool configuration), or grind soft surfaces by spreading out the weight and using more tooling (9 tool configuration). Sandpaper and our ScanPad maintenance pads can also be used with the SC 330, making it one of the most versatile machines on the market.

The SC 330 can easily be separated into two different modules for easy and convenient transportation, and makes it an extremely attractive option for limited space requirements.

**Technical Data**  
Motor power: 1,5 kW\* / 4 kW (2 hP)  
Voltage: 1 x 230V\* / 110 V / 3 x 400 V  
Current: 12 Amp / 16 Amp  
Frequency: 50Hz\* / 60 Hz  
Speed: 600/min\* / 1430/min / 250-750/min\*\*  
\* Standard  
\*\* Optimal feature

Grinding disc: 1 x 330 mm (1x13in)  
Grinding width: 330 mm (13in)  
Weight: 65 kg (143 lbs)

*We recommend the dust collector Scan Dust 2900 for dust free grinding.*

# Grinders

## Scan Combiflex 450



The Scan Combiflex 450 (SC 450) is a versatile grinder for both aggressive and fine grinding of concrete surfaces. Along with grinding concrete and natural stone and dry-polishing concrete and terrazzo, the SC 450 is great for removing lighter coatings. The SC 450 can also be used for sanding and re-finishing hardwood floors. With the wide range of available tooling options, the SC 450 can be used for virtually any application out there.

The SC 450 is the perfect machine for the rental market and smaller renovating businesses. It is flexible and easy to use. The SC 450 is the first machine in a new generation of floor grinders, which combines a small footprint with high productivity. It is the perfect machine for light coatings removal and building remodel applications.

The SC 450 is extremely easy to operate in residential and small commercial applications. Although the SC 450 weighs only 90 kg (198 lbs), it is built very robust with solid steel construction. Our patented spring-steel flex head system reduces vibration and allows the machine to grind rough surfaces with minimal effort.

The SC 450 can easily be separated into two different modules for easy and convenient transportation, and makes it an extremely attractive option for limited space requirements.

### Technical Data

Motor power: 1,5 kW (2 hP)  
Voltage: 1 x 230 V\* / 1 x 110 V  
Current: 10 Amp\* / 19 Amp  
Frequency: 50 Hz\* / 60 Hz  
Speed: 950/min  
\*Standard

Grinding discs: 3 x 150 mm (3x5,9in)  
Grinding width: 450 mm (18in)  
Weight: 90 kg (198 lbs)

*We recommend the dust collector Scan Dust 2900 for dust free grinding.*

## Scan Combiflex 450NS



The Scan Combiflex 450NS (SC 450NS) is the first machine in a new generation of floor grinders, which combines a small footprint with high productivity. It is the perfect machine for the rental market and smaller renovating businesses. Along with grinding concrete and natural stone, the SC 450NS is also perfect for building remodel applications and coatings removal, including paint, carpet residues and lighter coatings. With the wide range of available tooling options, the SC 450NS can be used for virtually any application out there.

The SC 450NS is extremely easy to operate in residential and small commercial applications. The SC 450NS also features variable speed, which is crucial for certain grinding and polishing applications along with coating removal. Although the SC 450NS weighs only 125 kg (276 lbs), it is built very robust with solid steel construction. Our patented spring-steel flex head system reduces vibration and allows the machine to grind rough surfaces with minimal effort.

In addition, the SC 450NS comes standard with a built-in water tank for wet grinding, which eliminates the need for an external water source.

### Technical Data

Motor power: 2,2 kW (3 hP)  
Voltage: 1 x 230 V  
Current: 12 Amp  
Frequency: 50 Hz / 60 Hz  
Speed: 500-1050/min

Grinding discs: 3 x 150 mm (3x5,9in)  
Grinding width: 450 mm (17,7in)  
Weight: 125 kg (276 lbs)  
Water tank: 18 liters

*We recommend the dust collector Scan Dust 2900 for dust free grinding.*



# Grinders

## Scan Combiflex 500i



The Scan Combiflex 500i (SC 500i) is a very effective and powerful machine for grinding concrete surfaces, but really shines in paint and coating removal applications. The midsize 500 mm (20in) grinding footprint enables very aggressive grinding, which is perfect for removing tough coatings and overlays. The SC 500i is very reliable and has minimal maintenance, resulting in a very low operating cost. With the wide variety of tooling options, the SC 500i is extremely versatile in its different applications.

The SC 500i is a robust and stable machine that uses a patented planetary system to drive its three heads. This patented system uses a double-sided cog belt combined with a gear ring to create a counter-rotating planetary that is extremely durable and easy to maintain. This allows the machine to grind at high disc speeds and heavier head pressure, which results in increased productivity. The SC 500i features 100% steel construction, along with our patented flex head system for reduced vibration and smooth operation on rough surfaces.

**Technical Data**  
Motor power: 4 kW (5,5 hP)  
Current: 16 Amp  
Voltage: 3 x 400 V / 3 x 230 V  
Frequency: 50 Hz / 60 Hz  
Speed: 1000/min

Grinding discs: 3 x 150 mm (3x5,9in)  
Grinding width: 500 mm (20in)  
Weight: 160 kg (353 lbs)

*We recommend the dust collector Scan Dust 2900 for dust free grinding.*

## Scan Combiflex 500PD



The Scan Combiflex 500PD (SC 500PD) is the ideal grinding machine for professional grinding and polishing applications. It's extremely versatile in its different applications. It's the optimal machine for grinding and polishing concrete, terrazzo, and different types of natural stone. The machine is also very effective when it comes to removal work and floor preparation. It really shines in paint and coating removal applications. The midsize 500 mm (20in) grinding footprint enables very aggressive grinding, which is perfect for removing tough coatings and overlays.

The SC 500PD uses a patented planetary system to drive its three heads. This patented system uses a double-sided cog belt combined with a gear ring to create a counter-rotating planetary that is extremely durable and easy to maintain. This allows the machine to grind at high disc speeds and heavier head pressure, which results in increased productivity. The SC 500PD is a robust and stable machine that features 100% steel construction, along with our patented flex head system for reduced vibration and smooth operation on rough surfaces. The SC 500PD is very reliable and has minimal maintenance, resulting in a very low operating cost.

In addition, the SC 500PD comes standard with a built-in water tank for wet grinding, which eliminates the need for an external water source.

**Technical Data**  
Motor power: 4 kW (5,5 hP)  
Voltage: 3 x 400 V\* / 3 x 230 V / 1 x 230 V  
Current: 16 Amp\* / 32 Amp  
Frequency: 50 Hz / 60 Hz  
Speed: 500-1000/min  
\*Standard

Grinding discs: 3 x 150 mm (3x5,9in)  
Grinding width: 500 mm (20in)  
Weight: 170 kg (375 lbs)  
Water tank: 18 liters

*We recommend the dust collector Scan Dust 2900 for dust free grinding.*

# Grinders

## Scan Combiflex 650



The Scan Combiflex 650 (SC 650) is a robust and stable machine made of steel, designed for commercial projects. The SC 650 uses a patented planetary system to drive its three heads. This patented system uses a double-sided cog belt combined with a gear ring to create a counter-rotating planetary that is extremely durable and easy to maintain. The counter-rotating design also reduces operator fatigue and allows the machine to be operated with minimal effort.

The SC 650 features a grinding width of 650 mm (26in), and is perfect for both residential and commercial applications. The SC 650 is also our largest machine that can be ordered in a 230V/1Ph input configuration, which makes it extremely versatile for jobs with limited power options.

The SC 650 also has two different options for wet grinding. It features a water valve inlet, which comes standard and allows the operator to connect a water hose as the main water supply. As an optional feature, the SC 650 can be purchased with a built-in water tank, which eliminates the need for an external water hose. This is very beneficial in a situation where no running water is available, yet grinding wet is necessary.

### Technical Data

Motor power: 7,5 kW\* / 4kW (10 hP)  
Voltage: 3 x 400 V\* / 3 x 230 V / 1 x 230 V  
Current: 16 Amp\* / 32 Amp  
Frequency: 50 Hz / 60 Hz  
Speed: 500-1100/min  
Grinding discs: 3 x 210 mm (3x8,3in)  
\*Standard

Grinding width: 650 mm (26in)  
Weight: 320 kg (705 lbs)  
Water valve inlet: Standard  
Water tank: Optimal feature

*We recommend the dust collector Scan Dust 6000 together with the dust separator Scan Dust Separator 6000 for dust free grinding.*

## Scan Combiflex 700RC



The Scan Combiflex 700RC (SC 700RC) is a robust and stable machine made of steel, designed for high productivity in both small and large areas. The 700 mm (28in) grinding footprint is perfect for commercial applications where compact size is important. The SC 700RC has three grinding heads, which spin in a counter-rotating configuration for increased efficiency and smooth operation. This allows the machine to grind or polish at higher speeds, while at the same time minimizing side torque. The truly unique feature of the SC 700RC is the Bluetooth radio control system it uses for controlling motion and grinding speed. The rugged, heavy-duty remote control unit allows the operator to move the machine in any direction, and maneuver with precision in tight areas. The ergonomic radio control system is beneficial since it reduces operator fatigue while maintaining a high level of consistency at the same time.

The SC 700RC also has a battery backup system built in to the machine. Thanks to the battery-powered transportation wheels, the machine can easily be loaded and unloaded with minimum effort.

The SC 700RC has two different options for wet grinding. It features a water valve inlet, which comes standard and allows the operator to connect a water hose as the main water supply. As an optional feature, the SC 700RC can be purchased with a built-in water tank, which eliminates the need for an external water hose.

### Technical Data

Motor power: 7,5 kW\* / 11 kW (15 hP)  
Voltage: 3 x 400 V\* / 3 x 230 V  
Current: 16 Amp\* / 32 Amp  
Frequency: 50 Hz / 60Hz  
Speed: 300-900/min\* / 500-1100/min  
\*Standard

Grinding discs: 3 x 240 mm (3x9,4in)  
Grinding width: 700 mm (28in)  
Weight: 460 kg (1014 lbs)  
Water valve inlet: Standard  
Water tank: Optimal feature  
Radio controlled: Standard  
Radio frequency: 2,4 GHz (Bluetooth)  
Batteries, remote control: NiHM  
Battery backup for transport: Standard

*We recommend the dust collector Scan Dust 6000 together with the dust separator Scan Dust Separator 6000 for dust free grinding.*

# Grinders

## Scan Combiflex 800



The Scan Combiflex 800 (SC 800) is a robust and stable machine made of steel, designed for high productivity in large areas. The SC 800 offers 800 mm (32in) of grinding power combined with 380 kg (838 lbs) of weight, making it the perfect machine for commercial applications. The SC 800 has three grinding heads, which spin in a counter-rotating configuration for increased efficiency and smooth operation. This allows the machine to grind or polish at higher speeds, while at the same time minimizing side torque and stress on the operator. The ergonomic design also reduces vibrations for the operator, and enables the machine to produce consistent results with minimal effort.

The SC 800 also uses a very high disc to drum ratio, which results in each grinding head turning at a very rapid speed. This allows the SC 800 to polish extremely well, and increases the performance of each grinding head.

Additionally, the SC 800 has two different options for wet grinding. It features a water valve inlet, which comes standard and allows the operator to connect a water hose as the main water supply. As an optional feature, the SC 800 can be purchased with a built-in water tank, which eliminates the need for an external water hose.

### Technical Data

Motor power: 11 kW / 7,5 kW\* (15 hP)  
 Current: 32 Amp / 16 Amp\*  
 Voltage: 3 x 400 V / 3 x 230 V (7,5 kW motor)  
 Frequency: 50 Hz / 60 Hz  
 Speed: 500-1400/min  
 \*Standard

Grinding discs: 3 x 240 mm (3x9,4in)  
 Grinding width: 800 mm (32in)  
 Weight: 380 kg (838 lbs)  
 Water valve inlet: Standard  
 Water tank: Optimal feature

*We recommend the dust collector Scan Dust 6000 together with the dust separator Scan Dust Separator 6000 for dust free grinding.*

## Scan Combiflex 1000RC



The Scan Combiflex 1000RC (SC 1000RC) is the largest model in our line of grinding machines. It is a robust and very stable machine, made entirely of steel and designed for commercial applications. The 1000 mm (40in) grinding footprint is perfect for large commercial applications where high productivity is necessary.

The SC 1000RC has six grinding discs, which rotate on a large drum that turns in the opposite direction. With the unique positions of the six grinding heads, it's also possible to operate the machine in a four-disc configuration. This allows the machine to grind with increased head pressure, and is very useful for certain applications.

One main benefit of the SC 1000RC is the Bluetooth radio control system it uses for controlling motion and grinding speed. The rugged, heavy-duty remote control unit allows the operator to move the machine in any direction, and maneuver with precision in tight areas. The ergonomic radio control system is beneficial since it reduces operator fatigue while maintaining a high level of consistency at the same time.

The SC 1000RC also has a battery backup built in to the machine. Thanks to the battery-powered transportation wheels, the machine can easily be loaded and unloaded with minimum effort. Additionally, the SC 1000RC has two different options for wet grinding. It features a water valve inlet, which comes standard and allows the operator to connect a water hose as the main water supply. As an optional feature, the SC 1000RC can be purchased with a built-in water tank, which eliminates the need for an external water hose.

### Technical Data

Motor power: 15 kW (30 hP)  
 Voltage: 3 x 400 V  
 Current: 32 Amp  
 Frequency: 50 Hz / 60 Hz  
 Speed: 300-950/min  
 Grinding discs: 6 x 240 mm (6x9,4in)

Grinding width: 1000 mm (40in)  
 Weight: 700 kg (1543 lbs)  
 Radio controlled: Standard, 24 V  
 Radio frequency: 2,4 GHz (Bluetooth)

Batteries, remote control: NiHM  
 Water valve inlet: Standard  
 Water tank: Optimal feature

*We recommend the dust collector Scan Dust 6000 together with the dust separator Scan Dust Separator 6000 for dust free grinding.*



# Grinders

## Scan Combiflex 800 Propane



The Scan Combiflex 800 Propane (SC 800 Propane) is a robust and stable machine, designed to be operated 100% from propane, with no need for external electrical power. The SC 800 Propane is great for outdoor applications where there are limited power options. With its weight and horsepower, the SC 800 Propane is a powerful and efficient machine, engineered for any application out there.

The ergonomic design allows the machine to grind and polish at higher speeds, while at the same time minimizing side torque and stress on the operator. The ergonomic design also reduces vibrations for the operator, and enables the machine to produce consistent results with minimal effort.

### Technical data

Motor power: 25 hp / 18,5 kW

Speed: 550-960 / min

Grinding discs: 3 x 9,5in / 3 x 240 mm

Grinding width: 32in / 800 mm

Weight: 970 lbs / 440 kg

Propane tank: 20 lbs / 9 kg

Water valve inlet: Standard



Ergonomic and user-friendly controls



Change tanks fast and easy



Battery box

## Scan Dust 2900



Choose your durable and washable main filter:  
sock filters or cartridge filters in polyester.

The dust collector Scan Dust 2900 (SD 2900) is a great option for all of our smaller grinders; Scanmaskin 18, Scan Combiflex 330, Scan Combiflex 450, Scan Combiflex 450NS, Scan Combiflex 500i and Scan Combiflex 500PD.

Known for its high reliability and performance, the SD 2900 is a versatile and efficient dust collector. The unique cylindrical design functions as a pre-separator, causing heavy particulate to separate from the fine dust. This allows the heavy particles to immediately drop into the bottom of the cyclone, bypassing the filters completely, which increasing filter life and suction performance.

The SD 2900 is equipped with Jet-Pulse, an efficient system that pulses the filters in order to keep them clean. The SD 2900 uses sock filters, which can easily be washed in order to prolong filter life. There is also a main filter option; a traditional cartridge filter that could be better when e.g. working on hardwood floors. The main filter cassette can easily be changed to fit the cartridge filters. In addition the SD 2900 is equipped with four HEPA 13 filters.

The SD 2900 also takes advantage of the Longopac bagging system, which makes managing dust very easy and efficient. With the Longopac system, all dust is collected in a heavy-duty plastic bag, which can easily be disposed with minimal dust contact.

### Technical Data

Motor power: 2,8 kW (4 hP)  
Voltage: 1 x 230 V / 1 x 110 V  
Current: 10 Amp  
Frequency: 50 Hz / 60 Hz  
Max airflow: 420 m<sup>3</sup>/h (14832 ft<sup>3</sup>)  
Max vacuum: 230 mbar  
Noise level: 65 dB(A)  
Weight: 30 kg (66 lbs)

Hose: ø 50 mm, 10 m + ø 50 mm, 10 m (ø 2in, 32ft + ø 2in, 32ft)  
Nozzle: 450 mm (17,7in)  
Main filter: Sock filters 0,94 m<sup>2</sup> (10,12ft<sup>2</sup>) or cartridge filter, polyester 2,4 m<sup>2</sup> (25,83ft<sup>2</sup>) >99,5% filtration  
Micro filter: HEPA H13, 2x0,76 m<sup>2</sup> (2x8,18ft<sup>2</sup>) >99,95% filtration  
Filter cleaning: semi-automatic  
Dimensions: 560 x 800 x 1300 mm (22 x 31,5 x 51 in)  
Transportation mode: 1120 mm (44 in)

## Scan Dust 6000 & Scan Dust Separator 6000



The dust collector Scan Dust 6000 (SD 6000) is designed for use in conjunction with our larger grinders Scan Combiflex 650, Scan Combiflex 700RC, Scan Combiflex 800, and Scan Combiflex 1000RC.

The SD 6000 is a very high capacity vacuum that provides superior airflow and water lift for heavy grinding applications. This model is equipped with Jet-Pulse, an efficient system that pulses the filters in order to keep them clean. The main filter contains of four washable and durable cartridge filters with up to 99,5 % filtration. In addition, the SD 6000 is equipped with four HEPA filters that comply with the HEPA 13 regulations and filters up to 99,95% of the particles. The SD 6000 also takes advantage of the Longopac bagging system, which makes managing dust very easy and efficient. With the Longopac system, all dust is collected in a heavy-duty plastic bag, which can easily be disposed with minimal dust contact.

For optimal result, use the Scan Dust 6000 together with the Scan Dust Separator 6000 (SD Separator 6000). The SD Separator 6000 separates up to 90% of the dust particles. This means that the filters of the Scan Dust 6000 don't need to be cleaned as often as when the SD Separator 6000 isn't in use and the filters also last longer. Additionally, the airflow is high for a longer time. The SD Separator 6000 is delivered with a hose, 3 m (9ft), for connection to the dust collector.

### Technical Data

Motor power: 5,5 kW (7,5 hP)  
Voltage: 3 x 400 V\*/3 x 230 V  
Current: 16 Amp  
Frequency: 50 Hz / 60 Hz  
Max airflow: 530 m<sup>3</sup>/h (18717ft<sup>3</sup>)  
Max vacuum: 300 mbar  
Noise level: 70 dB(A)  
\*Standard

Hose: ø 50 mm, 10 m + ø 76 mm, 10 m (ø 2in, 32ft + ø 3in, 32ft)  
Nozzle: 450 mm (17,7in)  
Main filter: Cartridge filter, polyester 4x1,4 m<sup>2</sup> (4x15,07ft<sup>2</sup>) >99,5% filtration  
Micro filter: HEPA H13, 4x0,76 m<sup>2</sup> (4x8,18ft<sup>2</sup>) >99,95% filtration  
Filter cleaning: semi-automatic  
Dimensions: 1140 x 720 x 1775 mm (44,9 x 28,3 x 69,9 in)  
Weight: 180 kg (397lbs)



**Concrete Test Kit**

Make your tooling choice easier with the Mohs hardness test kit. Soft diamonds on soft concrete is not a great combination, neither hard diamonds on hard concrete. The concrete test kit helps you to determine the hardness of the concrete surface and thereby makes your tooling choice easier. This helps to increase productivity and reduce tool wear.

**Bauta Crush, Tiger, Piranha and Razorback**

The Bauta Crush, Tiger, Piranha and Razorback tools are diamond tooling for effective coatings removal.

**Bauta Crush**

BAUTA CRUSH is a diamond tool with large PCD-Chips. Very efficient and aggressive at the removal of coatings and milling of concrete.



**Twin Tiger**

The Twin Tiger is a very aggressive diamond tool used for removal of thick coatings up to 7 mm, (0,28in) from hard surfaces.

**Tiger Gold**

The Tiger Gold is an aggressive diamond tool used for removal of thick coatings up to 7 mm (0,28in) If you want to release pressure from the surface while still effectively removing the coating, you can combine the Tiger Gold tool with a grinding tool like the Bauta Double Black or Blue.

**Tiger Silver**

The Tiger Silver is an aggressive diamond tool used for removal of coatings up to 4 mm, (0,16in) If you want to release pressure from the surface and/or get a grinding effect while removing the coating, you can combine the Tiger Silver tool with a grinding tool like the Bauta Double Black or Blue.

**Razorback Silver**

The Razorback Silver is a very useful diamond tool for removal of thinner coatings up to 3 mm, (0,12in) from concrete surfaces. It can, e.g., be used for removing paint, flake flooring, glue residue, and carpet residues. The Razorback tool removes the coating and grinds the surface at the same time.

**Piranha**

The Piranha is a very useful diamond tool for removal of thinner coatings up to 3 mm, (0,12in) from concrete surfaces. It can, e.g., be used for removing paint, flake flooring, glue residue, carpet residues. Piranha removes coating from the concrete or stone surfaces with minimum damage on the surface under the coating. Notice that porous and soft concrete floors can tear on the tool.



**Bush Hammer**

If you want to create a very ruff surface with your grinder (grinders SC 650 or SC 800) you can use the Bush Hammer Tool. You can compare the result of the Bush Hammer Tool to a surface where a scarifier or a shot blaster has been used.



## Bauta Double

Bauta Double is our premium line of diamond tooling. Bauta Double are effective and high quality grinding tools in a wide range of grit and bonds.



### Bauta Double Silver

This is a tool with very rough diamonds to scrub the surface and get it clean from concrete membrane or coating.



### Bauta Double Black

This is a tool with rough diamonds for rough grinding. This is a useful tool to use before any coating of the surface with putty, thermoset coatings or tiles etc.



### Bauta Double Brown

This tool is a diamond tool with medium coarseness. For medium rough grinding before thicker coating.

### Every color of the Bauta Double comes in ten different bonds:

- SCSSSS: Special diamond tool
- SCSSS: Extremely soft diamond tool for concrete floors with a glossy hard surface
- SCSS: Extra soft diamond tool for extra hard concrete
- SCS: Soft diamond tool for hard concrete
- SCM: Medium hard diamond tool for fast cutting of normal concrete
- SCL: Hard diamond tool for normal concrete (longer diamond life)
- SCX: Extra hard diamond tool for soft concrete and filler remnants
- SCXX: Very hard diamond tool for rain damage concrete and rough concrete surfaces
- SCXXX: Extremely hard diamond tool for newly cast concrete
- SCXXXX: Special diamond tool



### Bauta Double Blue

This is a tool for fine grinding before painting or thinner coatings.



### Bauta Double Green

This tool provides a fine and smooth surface. The Bauta Double Green is perfect for grinding before varnishing or before other thin surface protection is used. The Bauta Double Green is also used in the first step in our polishing system Scan Combifloor for shiny concrete floors.



### Bauta Double Red

This tool can be used for grinding concrete, and both wet and dry natural stone. It can also be used as an extra step in the polishing system Scan Combifloor. That would increase the longevity of the tools used after.



### Bauta Double White

This tool provides a very nice and smooth surface. It is ideal for use on concrete, and both wet and dry natural stone. The Bauta Double White is often used in the second step in our polishing system Scan Combifloor.



### Bauta Double Yellow

This tool is used if you want to add a grinding step to our Scan Combifloor system in order to increase the life of the plastic bond polishing tools. The Bauta Double Yellow is great to use when grinding natural stone, both wet and dry.

## RoundOn

The RoundOn is a great grinding tool for a great price with an increased longevity. The 3-segment design increases the surface area for faster grinding and the round shape minimizes damage on tooling and machine should the operator hit obstacles in the floor.

Other benefits:

- Convenient color coding for easy grit recognition
- High quality diamond rods from France
- High diamond count
- Superior bonds made from specialized metal alloys for maximum productivity
- Quick attach ScanOn system for “15 second tool-up”
- Completely interchangeable with ALL Scan Combiflex grinding machines



### RoundOn Black

This is a tool with rough diamonds for rough grinding. This is a useful tool before any coating of the surface with putty, thermoset coatings or tiles etc.



### RoundOn Blue

This is a tool for fine grinding before painting or thinner coatings.



### RoundOn Green

This tool provides a very fine and smooth surface. The RoundOn Green is perfect to use before varnishing or before any other thin surface protection is used.



### RoundOn White

This tool provides a very nice and smooth surface.

**Every color of RoundOn comes in five different bonds:**

- SCSS: Extra soft diamond tool for hard glossy concrete  
 SCS: Soft diamond tool for hard concrete  
 SCM: Medium hard diamond tool for aggressive grinding of normal hard concrete  
 SCX: Hard diamond tool for soft concrete and filler remnants  
 SCXX: Very hard diamond tool for rain damaged concrete and rough concrete surfaces

## Round Rap

The Round Rap is the diamond tool for fast cutting on extremely hard surfaces. It's an extremely soft tool to be used on extra hard concrete and concrete floors with a glossy hard surface. With high quality diamonds and an unique adhesive, the Round Rap effectively provides sustainable results.



Round Rap Black



Round Rap Blue



Round Rap Green



Round Rap White



**RDC**

This is our original tool for polishing concrete and terrazzo. The RDC is best suited with the grinders SC 330, SC 450, SC 450NS, SC 500i and SC 500PD.



**RDC Grey**  
#50



**RDC Black**  
#100



**RDC Blue**  
#200



**RDC Red**  
#400



**RDC White**  
#800



**RDC Yellow**  
#1500



**RDC Green**  
#3000

**RDC Max**

This is our most efficient and most economical choice when polishing concrete and terrazzo. A polishing tool with great durability which gives a glossy finish. The RDC Max is designed for dry use, and are best suited for the following grinders: SC 650, SC 700RC, SC 800 and SC 1000RC.



**RDC Max**



**RDC Max Grey**  
#50



**RDC Max Black**  
#100



**RDC Max Blue**  
#200



**RDC Max Red**  
#400



**RDC Max White**  
#800



**RDC Max Yellow**  
#1500



**RDC Max Green**  
#3000

**WOD – Wet Or Dry**

The WOD discs is a unique system that allows you to grind and polish new and old natural stone floors to a glossy finish with an easy and quick system.

One of the key factors of the WOD system is that it can be performed DRY without the use of water. But with the same WOD discs can you also grind and polish your floor wet, with water. The WOD discs are attached to your ScanCombiflex grinder with a Velcro interface pad, which provides additional cushion to the disc. The WOD system is simple and provide an excellent polish to all types of natural stone floors.



## Scan Combiflex Handyman

## Tools for Handyman and other kind of hand grinders



The Scan Combiflex Handyman (SC Handyman) is a heavy-duty hand grinder designed for grinding edges and corners that are difficult to grind with a larger machine. The SC Handyman has a grinding width of 125 mm (5in), and can be used with any of our 125 mm sized tooling, such as the Elastic Metal 125, Tiger 125, Turbo 125, etc.

The SC Handyman comes packaged in a red metal box, and is the perfect size for easy transportation.

### Technical Data

Power: 1530 Watt

Voltage: 230 V

Frequency: 50 Hz / 60 Hz

Weight: 4,7 kg (10,4 lbs), incl. metal box: 8,9 kg (19,6 lbs)

Grinding width: 125 mm (4,9in)

Speed: 3400-8000/min



### Tiger 125

For removal of thicker coatings from concrete.



### Claw 125

For removal of thinner coatings and when the surface under the coating is sensitive.



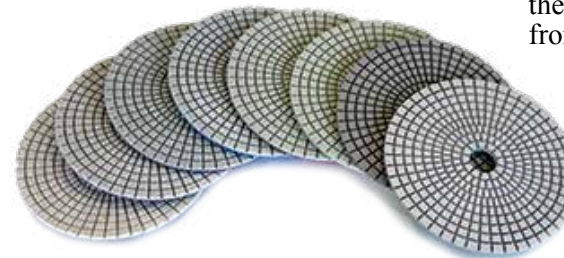
### Turbo 125

An efficient and durable grinding plate for rough grinding.



### Elastic metal 125

For grinding in different grits on concrete, terrazzo and natural stone. Should be used prior to applying thin coatings or polishing the floor, in order to remove deep scratches from the surface.



### Poler pads 125

Polishing Pads for wet or dry concrete, terrazzo or natural stone.

**Scan Combiclean 380**

The Scan Combiclean 380 is a flexible, robust and ergonomic machine that is very compact and works well for small to medium spaces.

A screw head made of rustproof steel makes the machine impact resistant and the high pressure from the brush gives a perfectly clean result. The Scan Combiclean 380 works perfect together with our ScanPad Dancer diamond polishing pads. A waste water tank with a low placed emptying tube makes the cleaning easy. The waste water tank is also easy to remove. The adjustable handle has many different positions, and the panel is easy to read.

**Technical Data**

Work width: 38 cm (15in)

Clean / waste water: 14 liters / 16 liters

Work time: 1,2 hours

Weight: 59 kg (130 lbs)

Dimensions: 750 x 470 x 1030 mm (29,5 x 18,5 x 40,5 in)

**ScanPad Dancer**

For maintenance of floors, the efficient ScanPad Dancer pads work great. You can easily maintain different types of floors; industrial floors, terrazzo, natural stone and plastic flooring.

The ScanPad Dancers can also be used in the end of our polishing system Scan Combifloor.

The ScanPad Dancer is available in four types of coarseness:



**ScanPad Dancer Nr 1 Red (coarsest)**



**ScanPad Dancer Nr 2 Blue**



**ScanPad Dancer Nr 3 Yellow**



**ScanPad Dancer Nr 4 Green**



## Impregnations

### SC-Shine™

The SC-Shine™ provides a high glossy, protective finish, makes the floor stain resistant, and reduces maintenance without the expense and preparation as other coatings have. It also provides a dust protected surface. It is a cosmetic finish that can replace waxes and acrylic sealers. While giving a similar appearance as wax, SC-Shine™ provides a finish that requires very little maintenance in comparison to a wax finish.

How to use SC-Shine™:

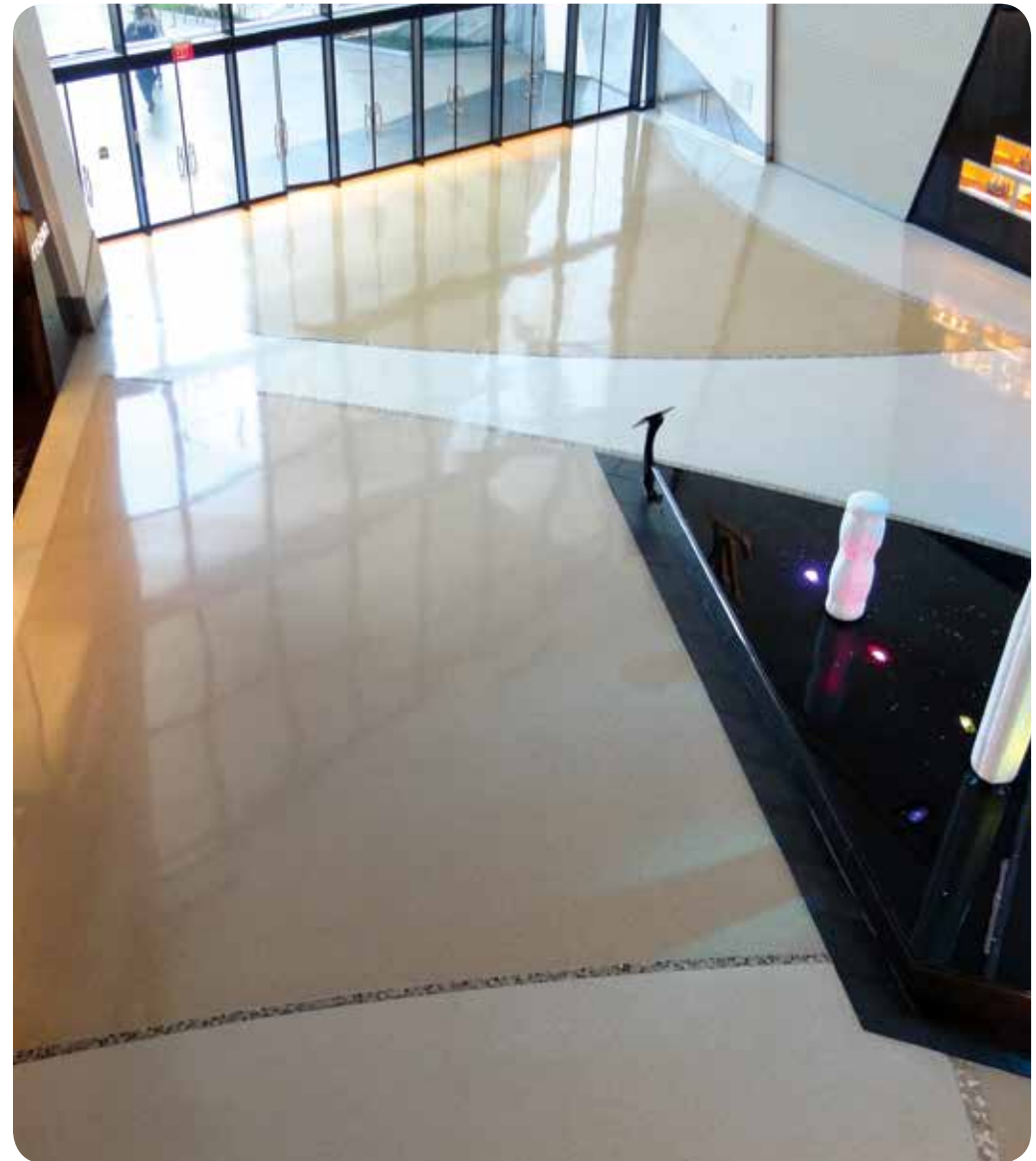
1. Grind according to instructions.
2. Clean the surface carefully.
3. Work SC-Shine™ into the surface in a very thin layer, approx. 0,02 liter per m<sup>2</sup>.
4. Let it evaporate until the surface is totally dry.  
Drying time: approx. 20 minutes to 1 hour depending on temperature and humidity.

### SC-Proof™

The SC-Proof™ is intended for use on both new and old concrete for impregnation and hardening of the surface. It's also used for increased dust control in, for example, warehouse spaces, industrial floors, and parking areas. SC-Proof™ is a user friendly product that increases the durability of the concrete surface. You get an easy-maintenance concrete surface that is resistance to abrasion, acid, stains, and dust, as well as minimizing marks from black rubber wheels. SC-Proof™ is an environmentally friendly product that does not emit emissions nor is flammable.

How to use SC-Proof™:

1. Grind according to instructions.
2. Clean the surface so it's free from dirt, dust, paint and oil.  
The surface temperature should be over +5°C.
3. Pour SC-Proof™ richly, approx. 0,1-0,2 liter/layer/m<sup>2</sup>, on the surface and dispense the product with a soft brush.
4. Let evaporate a few hour until the surface is dry.
5. When the surface is dry, repeat the application of SC-Proof™.
6. The surface is walkable within approx. 2-4 hours. Wait about 48 hours before standing water is allowed.



Shiny polished floors are not only beautiful to look at, but also easy to maintain.

## Grinding and Polishing Systems



**Removal work and floor preparation**



**Scan Combifloor – Polished Concrete**



**Grinding of bridges and parking areas**



**Grinding of hardwood floors and parquet flooring**

## Removal Work and Floor Preparation

### Removal work of old coatings up to 7 mm (0,28in)

We recommend using our larger grinders Scan Combiflex 650, Scan Combiflex 700RC, Scan Combiflex 800 or Scan Combiflex 1000RC when using these tools.

#### Step 1.



Alternative A. Twin Tiger



Alternative B. Tiger Gold

#### Step 2.

To remove deep scratches from the Tiger-tool use the Bauta Double Black.



### Removal work of old coatings up to 4 mm (0,16in)

We recommend using our grinders Scan Combiflex 330, Scan Combiflex 450, Scan Combiflex 450NS, Scan Combiflex 500i or Scan Combiflex 500PD.

#### Step 1.



Alternative A. Tiger Silver



Alternative B. Piranha

#### Step 2.

To remove deep scratches from the Tiger-tool use The Bauta Double Black.



### Floor preparation before painting

Use the Bauta Double Blue.



For really hard concrete, use the Round Rap Blue.



### Floor preparation before new coating thicker than 0,5 mm (0,02in)

Use the Bauta Double Black.



For really hard concrete, use the Round Rap Black.



If you want to create a very ruff surface with your grinder (grinder SC 650 or SC 800) you can use the Bush Hammer Tool. You can compare the surface of the Bush Hammer Tool to a scarifier or a shot blaster





# Scan Combifloor - Polished Concrete



## **The Standard Version** done in 4 grinding steps

### Step 1.

Start grinding with the Bauta Double Green until you have removed the top layer of the concrete and exposed the amount of aggregate you want. Vacuum the surface thoroughly.

### **Impregnate the surface thoroughly with SC-Proof™**

- A. The surface should be free from dirt and dust, and the temperature should be over +5°C
- B. Pour SC-Proof™ richly, approx. 0,1-0,2 liter/m<sup>2</sup>, on the surface and dispense the product with a soft brush. Alternatively, spray the surface thoroughly with a low-pressure spray.
- C. Let evaporate a few hour until the surface is dry.
- D. When the surface is dry, repeat the application of SC-Proof™.
- E. Wait approx. 2-4 hours before you continue the grinding process



### Step 2.

Grind the surface carefully with the the Bauta Double White to remove scratches after the first step. Vacuum the surface thoroughly.

### Step 3.

Grind the surface carefully with the RDC Black to remove scratches after the second step. Vacuum the surface thoroughly.



### Step 4.

Grind the surface carefully with the RDC Blue to remove scratches after the third step. Vacuum the surface thoroughly.



### **Impregnate the surface thoroughly with SC-Shine™**

- A. The surface should be free from dirt and dust.
- B. Work SC-Shine™ into the surface in a very thin layer, approx. 0,02 liter/m<sup>2</sup>.
- C. Let it evaporate until the surface is totally dry. The drying time is approx. 20 minutes to 1 hour depending on temperature and humidity.

Put the ScanPad Dancer Yellow on your clean grinder or on a high-speed burnishing machine and buff the surface until you have a clear reflection on the floor.

### **Impregnate the surface thoroughly with SC-Shine™ one more time.**

- A. The surface should be free from dirt and dust.
- B. Work SC-Shine™ into the surface in a very thin layer, approx. 0,02 liter/m<sup>2</sup>.
- C. Let it evaporate until the surface is totally dry. The drying time is approx. 20 minutes to 1 hour depending on temperature and humidity.

Put the ScanPad Dancer Green on your clean grinder or on a high-speed burnishing machine and buff the surface until you have a clear reflection on the floor.

The floor is now ready to use.

If you keep the floor dry the first 7 days, and after that use the ScanPad Dancer Green on your scrubber machine when you clean the floor with water, the floor will remain shiny and beautiful.



# Scan Combifloor - Polished Concrete

## The Higher Gloss Version done in 5 grinding steps

### Step 1.

Grind the surface with Bauta Double Green until you have removed the top layer of the concrete and exposed the amount of aggregate you want and can. Vacuum the surface thoroughly.



### Impregnate the surface with SC-Proof™

- A. The surface should be free from dirt and dust, and the temperature should be over +5°C
- B. Pour SC-Proof™ richly, approx. 0,1-0,2 liter/m<sup>2</sup>, on the surface and dispense the product with a soft brush. Alternatively, spray the surface thoroughly with a low-pressure spray.
- C. Let evaporate a few hour until the surface is dry
- D. When the surface is dry, repeat the application of SC-Proof™.
- E. Wait approx. 2-4 hours before you continue the grinding process



### Step 2.

Grind the surface carefully use the Bauta Double White to remove any scratches. Vacuum the surface thoroughly.



### Step 3.

To remove any scratches from the second step, carefully use the RDC Black. Vacuum the surface thoroughly.



### Step 4.

To remove any scratches from the third step, carefully use the RDC Blue. Vacuum the surface thoroughly.



### Step 5.

Grind the surface carefully with the RDC Red. Vacuum the surface thoroughly.

### Impregnate the surface with SC-Shine™

- A. The surface should be free from dirt and dust.
- B. Work SC-Shine™ into the surface in a very thin layer, approx. 0,02 liter/m<sup>2</sup>.
- C. Let it evaporate until the surface is totally dry. The drying time is approx. 20 minutes to 1 hour depending on temperature and humidity.



Put the ScanPad Dancer No. 3 Yellow on your clean grinder or on a high speed machine and buff up the surface until you get a clear surface.



### Impregnate the surface with SC-Shine™ one more time.

- A. The surface should be free from dirt and dust.
- B. Work SC-Shine™ into the surface in a very thin layer, approx. 0,02 liter/m<sup>2</sup>.



Put the ScanPad Dancer No. 4 Green on your clean grinder or on a high speed machine and buff up the surface until you get a clear surface.



The floor is now ready to use.

If you keep the floor dry the first 7 days and after that use the ScanPad Dancer No. 4 Green with your scrubber machine, the floor will remain shiny and beautiful. You only need to use water together with the ScanPad Dancer for maintenance of the floor. No detergent is needed.



# Scan Combifloor - Polished Concrete

## The Exclusive Version made in 7 grinding steps

### Step 1.

Grind the surface with Bauta Double Green until you have removed the top layer of the concrete and exposed the amount of aggregate you want and can. Vacuum the surface thoroughly.



### Impregnate the surface with SC-Proof™

- A. The surface should be free from dirt and dust, and the temperature should be over +5°C
- B. Pour SC-Proof™ richly, approx. 0,1-0,2 liter/m<sup>2</sup>, on the surface and dispense the product with a soft brush. Alternatively, spray the surface thoroughly with a low-pressure spray.
- C. Let evaporate a few hour until the surface is dry. Wait 10-12 hours
- D. When the surface is dry, repeat the application of SC-Proof™.
- E. Wait approx. 2-4 hours before you continue the grinding process



### Step 2.

Grind the surface carefully the Bauta Double White to remove any scratches. Vacuum the surface thoroughly.



### Step 3.

To remove any scratches from the second step, carefully use the RDC Black. Vacuum the surface thoroughly.



### Step 4.

Grind the surface carefully with RDC Blue to remove scratches after the RDC Black-step. Vacuum the surface thoroughly.



### Step 5.

Grind the surface carefully with the RDC Red. Vacuum the surface thoroughly.



### Step 6.

Grind the surface carefully with the RDC White. Vacuum the surface thoroughly.



### Step 7.

Grind the surface carefully with the RDC Green. Vacuum the surface thoroughly.



### Impregnate the surface with SC-Shine™

- A. The surface should be free from dirt and dust.
- B. Work SC-Shine™ into the surface in a very thin layer, approx. 0,02 liter/m<sup>2</sup>.
- C. Let it evaporate until the surface is totally dry. The drying time is approx. 20 minutes to 1 hour depending on temperature and humidity.



Put the ScanPad Dancer No. 3 Yellow on your clean grinder or on a high speed machine and buff up the surface until you get a clear surface.



### Impregnate the surface with the SC-Shine™ one more time.

- A. The surface should be free from dirt and dust.
- B. Work SC-Shine™ into the surface in a very thin layer, approx. 0,02 liter/m<sup>2</sup>.
- C. Let it evaporate until the surface is totally dry. The drying time is approx. 20 minutes to 1 hour depending on temperature and humidity.

Put ScanPad Dancer No. 4 Green on your clean grinder or on a high speed machine and buff up the surface until you get a clear surface.

The floor is now ready to use.

If you keep the floor dry the first 7 days and after that use ScanPad Dancer No. 4 Green with your scrubber machine, the floor will remain shiny and beautiful. You only need water together with the ScanPad Dancer for maintenance of the floor. No detergent is needed.





# Scan Combifloor - Polished Concrete



## The Matte Version made in 2 Grinding Steps

The result of the matte version of Scan Combifloor is not as glossy as the other versions, but it is likely to decrease dust. You get a matte concrete surface with less dust.

### Step 1.

Grind the surface with the Bauta Double Green until you have removed the top layer of the concrete and exposed the amount of aggregate you want and can.

Vacuum the surface thoroughly.



### Impregnate the surface with SC-Proof™

- A. The surface should be free from dirt and dust, and the temperature should be over +5°C.
- B. Pour SC-Proof™ richly, approx. 0,1-0,2 liter/m<sup>2</sup>, on the surface and dispense the product with a soft brush. Alternatively, spray the surface thoroughly with a low-pressure spray.
- C. Let evaporate a few hour until the surface is dry.
- D. When the surface is dry, repeat the application of SC-Proof™.
- E. Wait approx. 2-4 hours before you continue the grinding process.



### Step 2.

Grind the surface carefully use the Bauta Double White to remove any scratches. Vacuum the surface thoroughly.

### Impregnate the surface with SC-Shine™

- A. The surface should be free from dirt and dust.
- B. Work SC-Shine™ into the surface in a very thin layer, approx. 0,02 liter/m<sup>2</sup>.
- C. Let it evaporate until the surface is totally dry. The drying time is approx. 20 minutes to 1 hour depending on temperature and humidity.



Put the ScanPad Dancer No. 3 Yellow on your clean grinder or on a high speed machine and buff up the surface until you get a clear surface.



### Impregnate the surface with SC-Shine™ one more time.

- A. The surface should be free from dirt and dust.
- B. Work SC-Shine™ into the surface in a very thin layer, approx. 0,02 liter/m<sup>2</sup>.
- C. Let it evaporate until the surface is totally dry. The drying time is approx. 20 minutes to 1 hour depending on temperature and humidity.



Put the ScanPad Dancer No. 4 Green on your clean grinder or on a high speed burnishing machine and buff the surface until you have a clear reflection on the floor.



The floor is now ready to use.

If you keep the floor dry the first 7 days and after that use the ScanPad Dancer No. 4 Green with your scrubber machine, the floor will remain shiny and beautiful. You only need to use water together with the ScanPad Dancer for maintenance of the floor. No detergent is needed.

# Grinding of granite, marble and sandstone

## Step 1

Start grinding with the diamond tool Bauta Double White if you want to grind the surface in order to remove deep scratches, start grinding with the diamond tool Bauta Double White. Remember to always use water when grinding granite. Bauta Double White can be used for both wet and dry grinding.



## Step 2

If you use the Bauta Double White as a first step, we recommend that you use the Bauta Double Yellow as a second step to eliminate any possible grinding roses. Remember to always use water when grinding granite. Bauta Double Yellow can be used for both wet and dry grinding.



## Step 3 / Step 1

Use WOD Grey as your first step when no metal bond grinding is necessary. WOD Grey is a unique tool that enables both dry or wet grinding of natural stone with the same tool. The WOD-tools can be used both dry or wet. It is always good to use water or at least moisten the surface when grinding and polishing granite.



WOD Grey #50

## Step 4 / Step 2

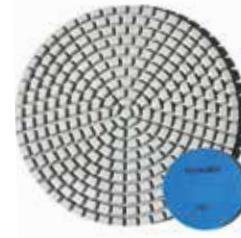
Use WOD Black as your first step when no metal bond grinding is necessary. WOD Black is a unique tool that enables both dry or wet grinding of natural stone with the same tool. The WOD-tools can be used both dry or wet. It is always good to use water or at least moisten the surface when grinding and polishing granite.



WOD Black #100

## Step 5 / Step 3

This can also be your third step when no metal bond grinding is necessary. Use the WOD Blue. You may need to moisten the surface when grinding and polishing granite.



WOD Blue #200

## Step 6 / Step 4

This can also be your fourth step when no metal bond grinding is necessary. Use the WOD Red. You may need to moisten the surface when grinding and polishing granite.



WOD Red #400

## Step 7 / Step 5

This can also be your fifth step when no metal bond grinding is necessary. Use the WOD White. You may need to moisten the surface when grinding and polishing granite.



WOD White #800

## Step 8 / Step 6

This can also be your sixth step when no metal bond grinding is necessary. Use the WOD Yellow. You may need to moisten the surface when grinding and polishing granite.



WOD Yellow #1500

## Step 9 / Step 7

This can also be your seventh step when no metal bond grinding is necessary. Use the WOD Green. You may need to moisten the surface when grinding and polishing granite.



WOD Green #3000



## Impregnate the surface thoroughly with SC-Shine™

- A. The surface should be free from dirt and dust.
- B. Work SC-Shine™ into the surface in a very thin layer, approx. 0,02 liter/m<sup>2</sup>.
- C. Let it evaporate until the surface is totally dry. The drying time is approx. 20 minutes to 1 hour depending on temperature and humidity.



Put the ScanPad Dancer no. 3 Yellow on your grinder or high-speed machine and buff the surface until you have a clear surface.



Impregnate the surface with SC-Shine™ one more time.



Put the ScanPad Dancer no. 4 Green on your grinder or high-speed machine and buff the surface until you have a clear surface.

## Grinding of Bridges and Parking Areas

Use a large grinder Scan Combiflex 650, Scan Combiflex 700RC, Scan Combiflex 800 or Scan Combiflex 1000RC. You get the best and fastest results with one of the remote controlled machines Scan Combiflex 700RC or Scan Combiflex 1000RC.



### Step 1.

Remove the old sealing layer and create a concrete clean surface with the Twin Tiger, Tiger Gold or Piranha.



### Step 2.

If you need to remove deep scratches from the Tiger tool, you can use the Bauta Double Black.



## Grinding of Hardwood Bridges

### Step 1.

Remove the old sealing layer and create a hardwood clean surface with the diamond tool Scratch with Claw or the Piranha tool.



### Step 2.

Remove the old sealing layer and create a wood clean surface with the diamond tool Scratch Ruff.





# Grinding of Hardwood Floors and Parquet Flooring

For grinding of hardwood floors and parquet flooring we recommend the grinder Scanmaskin 18.



## Grinding of Hardwood Floors

### Step 1.

If you need to remove any thicker coating use the diamond tool Scratch with Claw.



### Step 2.

For ruff grinding, leveling of an old hardwood floor and if you need to remove paint or varnish you use the diamond tool Scratch Ruff to get a leveled and hardwood-clean floor.



### Step 3.

After Step 1. and/or Step. 2 grind with the diamond tool Scratch Medium before you start using sandpaper. If you do not need to go through step one or two, you can go directly to step 4. Vacuum the floor thoroughly after each step.



### Step 4. / Step 1.

This can also be your first step if you already have a leveled floor without any coating. Remember to vacuum the surface thoroughly after each step. Put on the Velcro holders and the Middle Cushion before you put on the sandpaper on the grinder. Start to use sandpaper #24 or #40. It is always best to start with a fine grit depending on that you can save a step in the grinding process if it is ruff enough. Vacuum the surface between each step.

### Step 5. / Step 2.

Continue with sandpaper #60.

### Step 6. / Step 3.

Continue with sandpaper #100.

### Step 7. / Step 4

Continue with sandpaper #120.

The hardwood floor is now ready to be impregnated with oil or varnish.



Our sandpaper comes in various sizes: #16, #24, #36, #40, #60, #80, #100 och #120.

## Grinding of Parquet Flooring

### Step 1.

**Parquet flooring:** If you need to remove any type of varnish and you know you have thick hardwood parquet you can use the diamond tool Scratch Medium or the Scratch Fine for effective results.

**Laminate parquet:** Only use sandpaper.

### Step 2. / Step 1.

This can also be your first step if you already have a leveled floor without any coating. Put on the Velcro holders and the Middle Cushion before you put on the sandpaper on the grinder. Start to use sandpaper #24 or #40. It is always best to start with a fine grit depending on that you can save a step in the grinding process if it is ruff enough. Vacuum the surface between each step.

### Step 3. / Step 2.

Continue with sandpaper #60.

### Step 4. / Step 3.

Continue with sandpaper #100.

### Step 5. / Step 4

Continue with sandpaper #120.

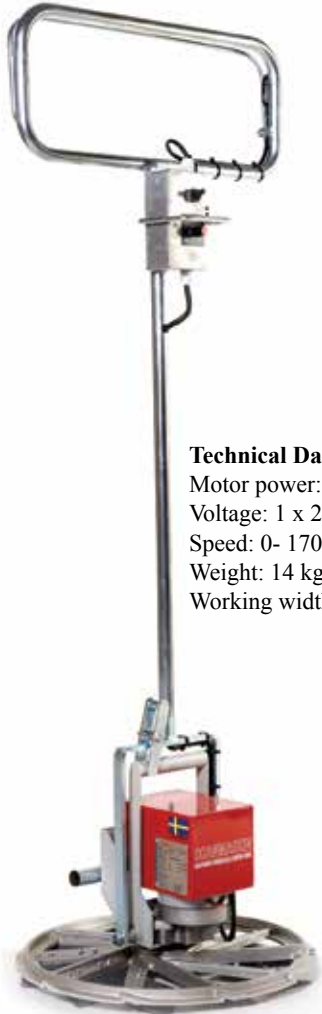
The parquet flooring is now ready to be impregnated with oil or varnish.

## Power Trowel Machine

### Electric Power Trowel Machine

An electric trowel machine to trowel resin-based floor coatings with natural or colored quartz sand.

Included: Machine, control handle, 1 trowel disc (diameter 500 mm), 20 trowel blades (installed), and removal and attachment key for trowel disc.



#### Technical Data

Motor power: 0,2 kW  
Voltage: 1 x 230 V / 1 x 110 V  
Speed: 0- 170/min  
Weight: 14 kg (31lbs)  
Working width: 475 mm (18,7in)

### Blade Options

We have different blades for different applications for both the electric power trowel and the battery power trowel.

**Grey Plastic**, made to be used on floor there you scatter the sand into the surface of a slurry and then trowel the surface to a smooth and nice surface.

**Compact Blades** (made in steel), made to be used on floor where you scatter the sand into the surface of slurry and then trowel the surface to a smooth and nice surface. Steel blades are faster than plastic, but the noise from the blades is higher and there is a risk that you will get thin “trowel-roses” in the surface when the floor is ready.

**White Flex** made to be used on when you mix the sand and epoxy to a mortal and bring the coating on the floor with a screedbox. Works also very good on scatter-system if you put a compact blade in steel behind each White flex.

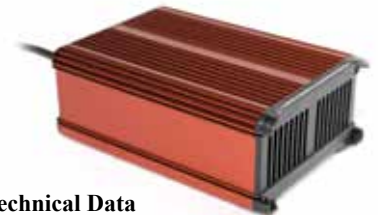
**STD-blades** made to be used on when you mix the sand and epoxy to a mortal and bring the coating on the floor with a screed box.

**Stone Carpet Blades** made to be used on “stone carpet floors”, floors with stones in the size of 2-3 mm, 3-4 mm and 4-6 mm.

### Battery Power Trowel

A battery trowel machine to trowel resin-based floor coatings with natural or colored quartz sand.

Included: Machine, control handle, 1 trowel disc (diameter 500 mm), 20 trowel blades (installed), and removal and attachment key for trowel disc. 3 battery belts with batteries and two chargers are also included.



#### Technical Data

Motor power: 0,2 kW  
Voltage, battery: 24 V  
Voltage, battery charger: 1 x 230 V / 1 x 110 V  
Speed: 0- 170/min  
Weight: 14 kg (31lbs)  
Working width: 475 mm (18,7in)



# SCANMASKIN

## MACHINES-MINERALS-KNOW-HOW



**Scanmaskin Sweden AB**  
(Head Office)  
Box 187  
SE-437 22 Lindome  
Tel: +46 31 99 49 70  
Fax: +46 31 99 48 70  
E-mail: [info@scanmaskin.se](mailto:info@scanmaskin.se)

*Visiting address*  
Heljesvägen 10  
437 36 Lindome

**Scanmineral Scanmaskin Finland OY**  
Raudoittajantie 3 A  
FIN-06450 Porvoo / Borgå  
Tel: +358 10 292 4700  
E-mail: [info@scanmaskin.fi](mailto:info@scanmaskin.fi)

**Scanmineral Scanmaskin Denmark APS**  
Torvegade 22  
DK-7330 Brande  
Tel: +45 97 18 00 58  
Fax: +45 97 18 45 58  
E-mail: [info@scanmineral.dk](mailto:info@scanmineral.dk)

**Scanmineral Scanmaskin Norway AS**  
Postboks 6, Furuset  
NO-1001 Oslo  
Tel: +47 63 87 60 00  
E-mail: [info@scanmaskin.no](mailto:info@scanmaskin.no)

*Visiting address*  
Tomtveien 12  
2015 Leirsund

**Scanmaskin USA Inc.**  
1407 132nd Ave. NE, Suite 8  
Bellevue, WA, 98005  
Tel. +1 425 209 0147  
E-mail: [info@scanmaskin.com](mailto:info@scanmaskin.com)

[www.scanmaskin.com](http://www.scanmaskin.com)